



THE 21ST INTERNATIONAL
OPERATIONS & MAINTENANCE
CONFERENCE IN THE ARAB COUNTRIES

Artificial Intelligence Diagnosis and Analysis

Fault troubleshooting in Roto-dynamic machinery

 #OmaintecConf

An Initiative by

Organized by



EXICON.
International Group
مجموعة أكزيكون الدولية



Artificial Intelligence Diagnosis and Analysis

A cooperation project between the SWCC, Saudi Arabia and
OPTIMIZERS , Egypt

 **OPTIMIZERS**

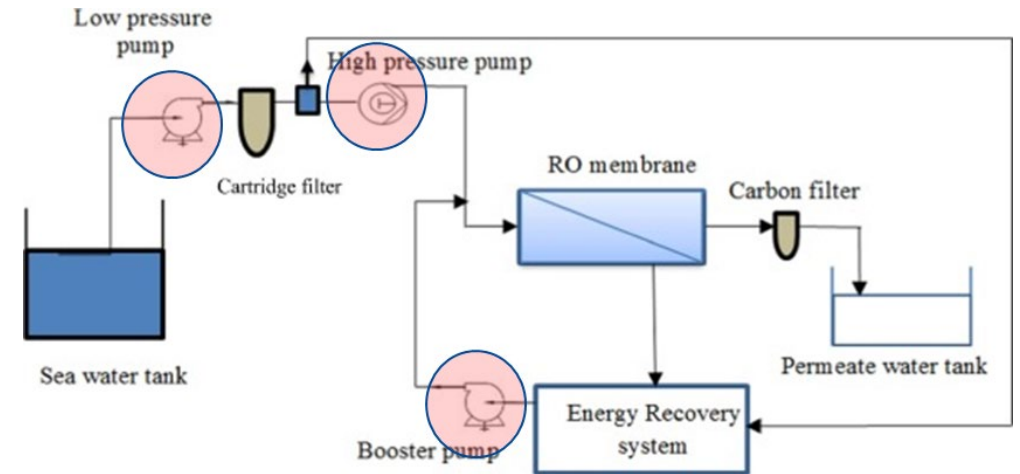
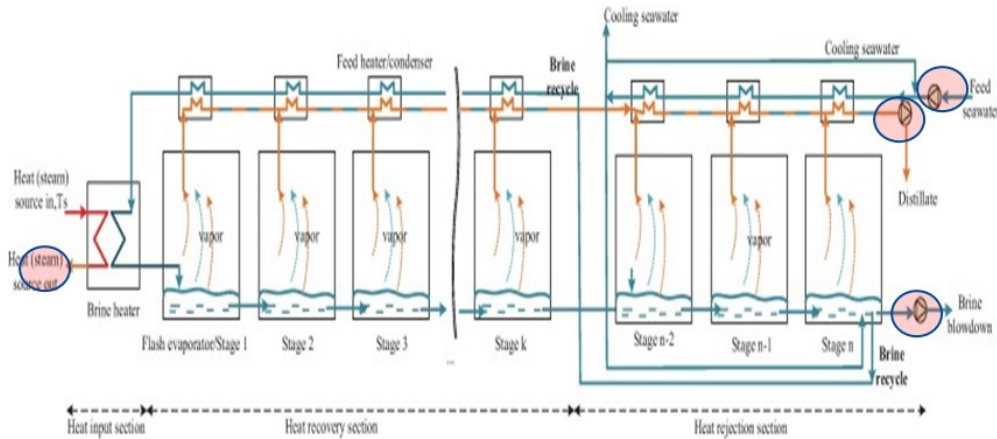
المؤسسة العامة لتحلية المياه المالحة
Saline Water Conversion Corporation (SWCC)



Introduction

Pumps is the heart of the desalination plants, which energize water to flow through the system.

Pumping power represent 70% of total power consumption in RO.



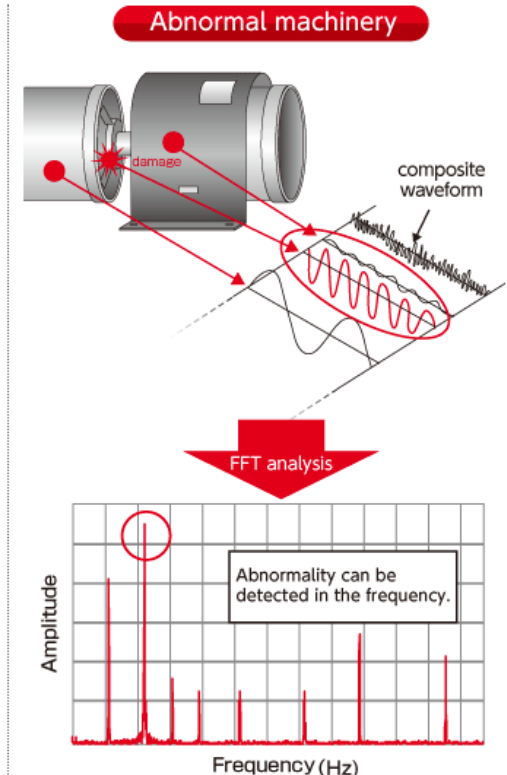
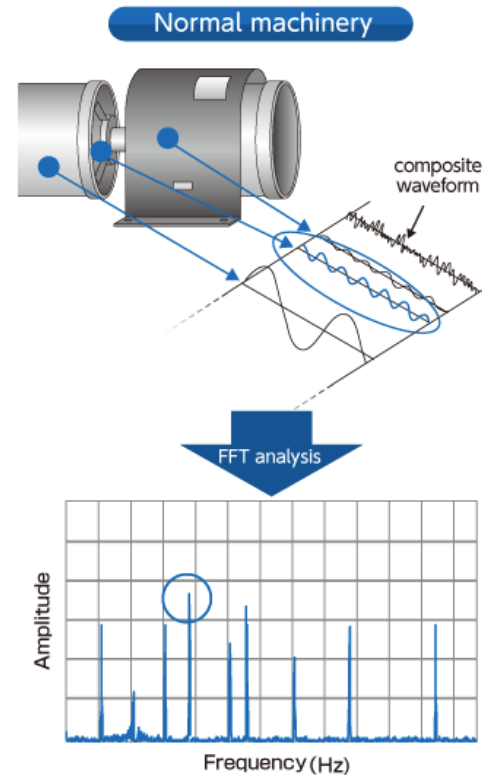
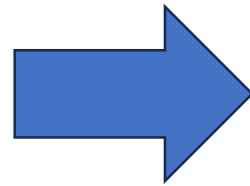


Idea Generation

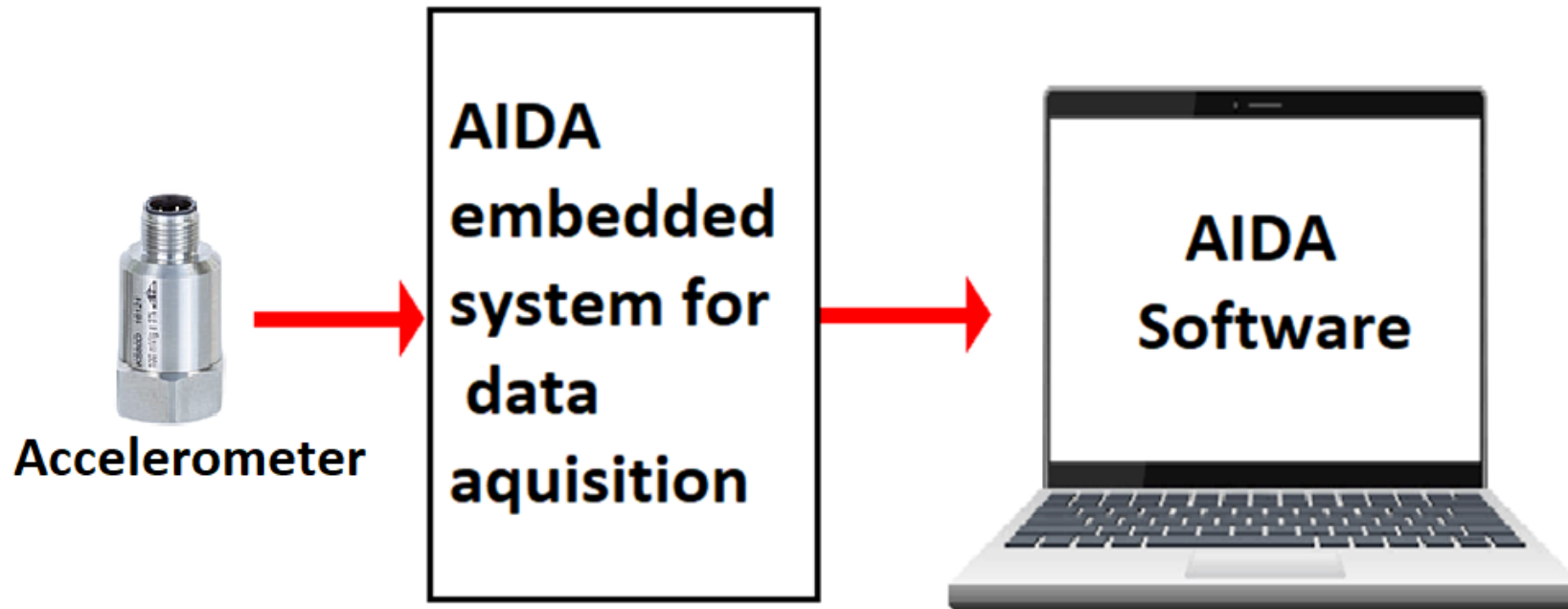
1. During the initiative of increase SWCC production up to 5.5 million cubic water per day, one of the unit was subjected to acid cleaning (major overhaul), after restart the unit one of the major pumps was forced to shut down.
2. Leading to 3 days shutdown (reliability and production loss). Inspection, spare parts check and purchase.
3. Prediction of faults would lead to sustain the production and enhance plants reliability.

Current status

Classical methods in troubleshooting (condition monitoring) the measurements of machines vibration then a human vibration analyst make the analysis using some sorts of spectrum analysis with graphical and analytical methods to make the exact trouble shooting



In the AIDA system a new utilization of the Artificial neural network to make sorting and classifications of problem making a real time continuous trouble shooting of machine faults with exact





Advantages



continuous machine monitoring



Inventory status continuous updates about spare parts with assets maintaining in safe



Utilizing the AI to increase plant reliability



Reduce unplanned shutdown



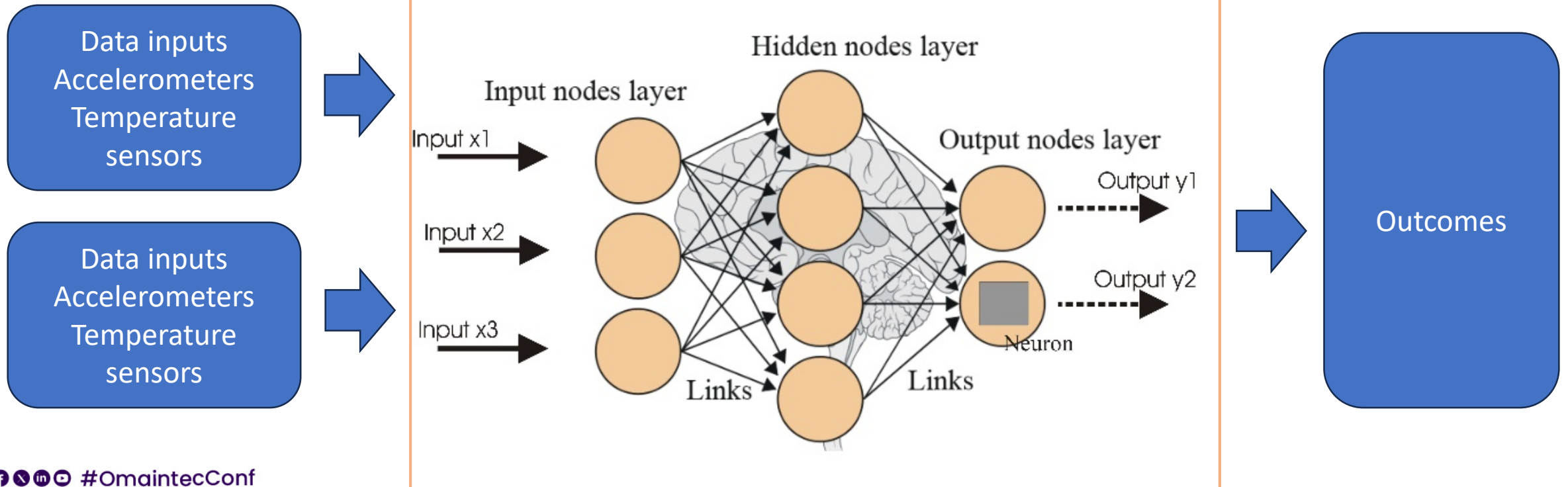
Smooth operation

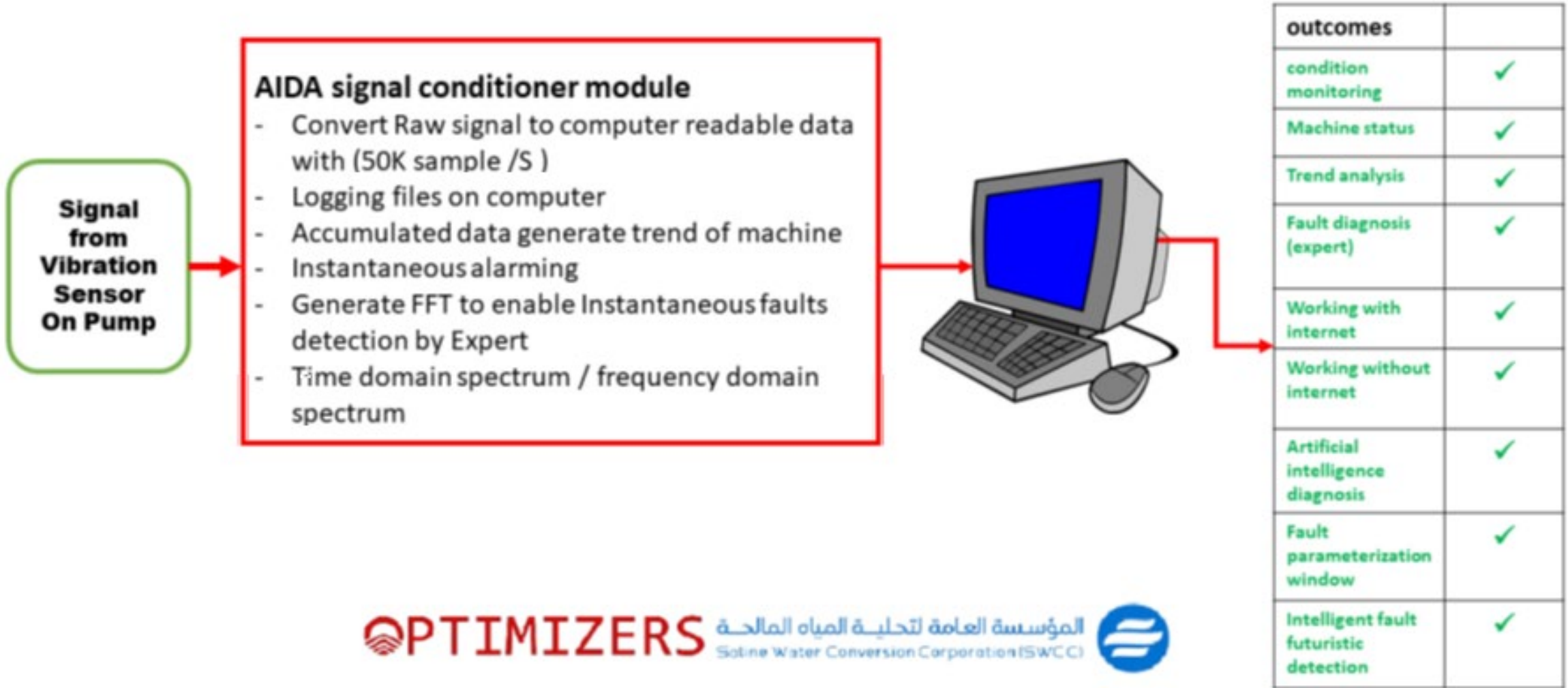


Increase operators awareness

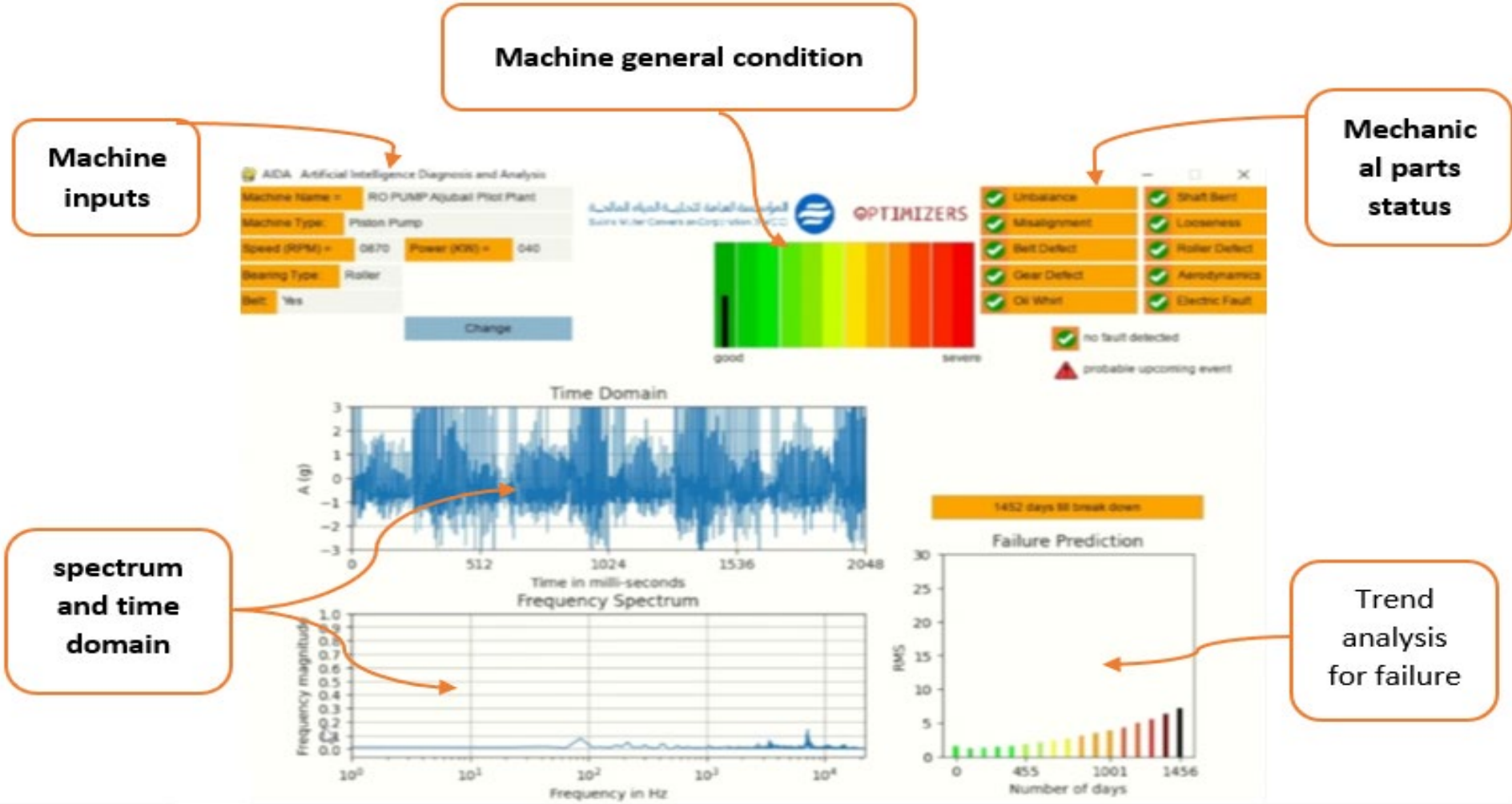
Concept

In the AIDA system a new utilization of the Artificial neural network to make sorting and classifications of problem making a real time continuous trouble shooting of machine faults with exact





System Interface



Outcomes



Condition monitoring

Getting the exact fault that is imminent to machine



Trend Analysis

The is a prediction AI method to obtain an accurate duration prior of machine failure



Machine health

According to the ISO standard 10816

An indicator represent the machine operating condition



logging

Complete history of all events occurred in machine are being logged



Future work

- Integrate the system with additional sensors to maximize the sensing and benefits
- Root cause analysis for the diagnosed faults



THE 21ST INTERNATIONAL
OPERATIONS & MAINTENANCE
CONFERENCE IN THE ARAB COUNTRIES

THANK
YOU!

    #OmaintecConf

An Initiative by



Organized by

